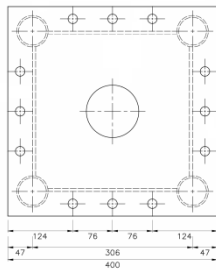
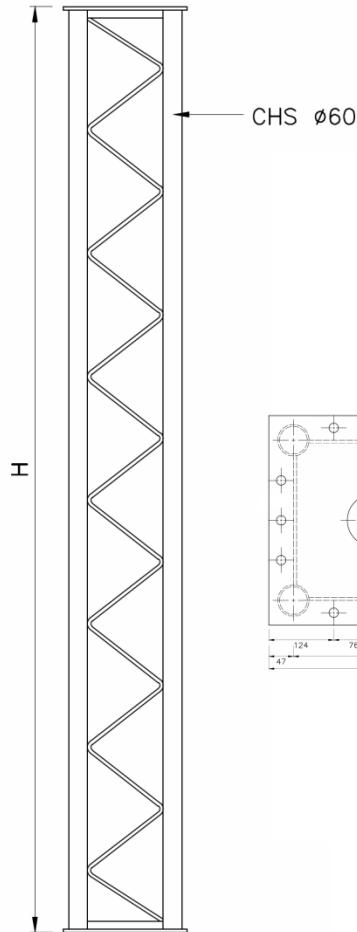


**SQUARE PROP - Type II-SWL 380kN**

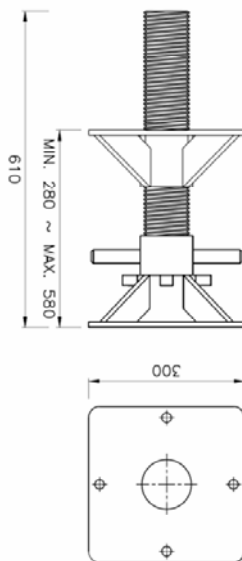


**AVAILABLE SIZE**

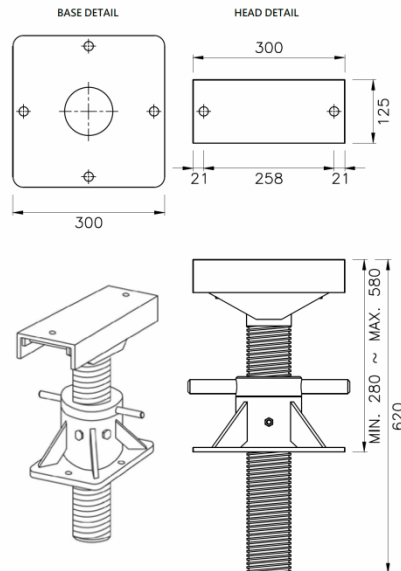
FSP-II-050	500	44.5kg
FSP-II-080	800	52.5kg
FSP-II-100	1000	57.4kg
FSP-II-120	1200	62.5kg
FSP-II-150	1500	62.5kg
FSP-II-200	2000	82.8kg
FSP-II-300	3000	108.7kg

**SECTION PROPERTIES -TYPE II**

Cross Sectional Area	2484mm <sup>2</sup>
Elastic Sectional Modulus Z	379230mm <sup>3</sup>
Second Moment of Area I	5688520mm <sup>4</sup>
Radius of Gyration r	151.3mm



**Base Jack**



**Fork Head Jack**



**FARS Engineering Limited**

Tel: (852) 2724-6689 Fax: (852) 2635-6066

E-mail: [admin@fars-engineering.com](mailto:admin@fars-engineering.com)

**SQUARE PROP- TYPE II**

**Technical Data**

**When square prop – type II is fixed and secured at both ends, no linking tube as bracing.**

Allowable Load (kN)

